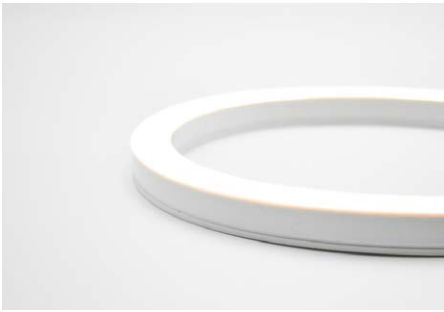


NE100	24	16	3000K	67	80	DD
Model	Voltage	Width	CCT	IP	CRI	Length
	24: 24V	16: 16mm	3000K	67: IP67 (Wet)	80: 80+	5m 10m 50m Customized



Color	Power	Brightness	Luminous Efficiency	Project
3000K	2.74 W/ft	130 lm/ft	48 lm/W	
				Qty
				Date
				Client

Standard CCT



3000K

Style	Dual-Bend (Top-Bend and Side-Bend) (White)
Dimension	W16 x H15mm (W0.63 x H0.59in)
Input Voltage	24VDC
Beam Angle	120°
CRI	80+
Power	9W/m (2.74W/ft)
Max. Length (No Voltage drop)	5m(16.4ft)
Cut Length	Cut every half-inch
Minimum bending diameter	120mm (4.72in)
Minimum twist degree	360°/1000mm (39.4in)
IP Grade	IP67
Operating Temperature	-20°C~45°C
Lifespan	50,000h (indoor), 5 year warranty; 36,000h (outdoor), 3 year warranty
LED CCT & Wavelength	3000K;
Dimming Method	PWM (dimmable driver like RF, Bluetooth, 0/1-10V, Triac, DALI, DMX, WIFI etc.)
Certification	UL, TUV-CE, RoHS

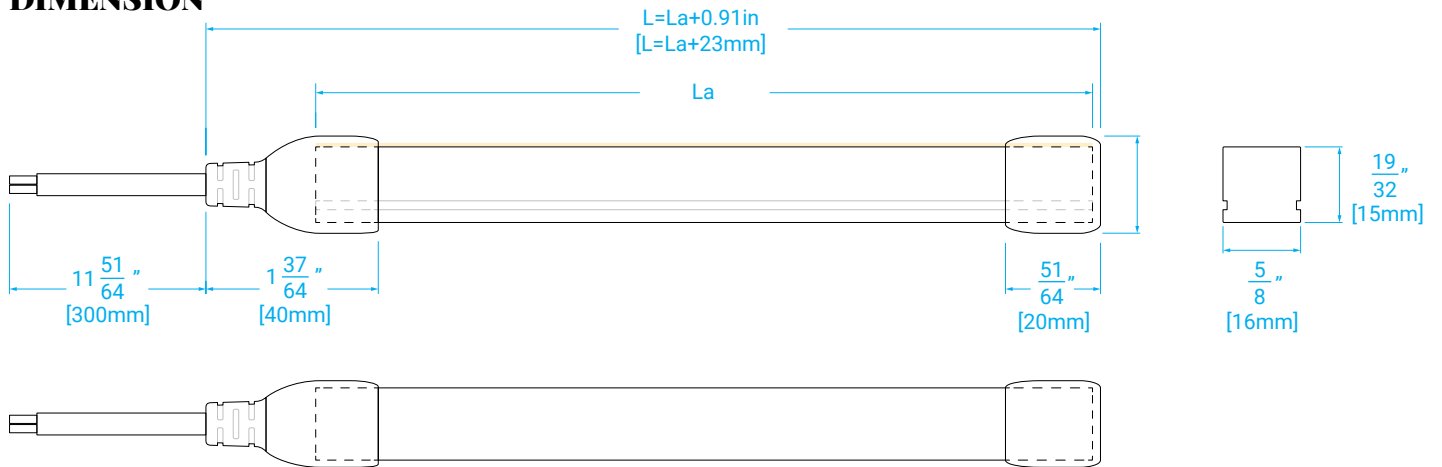
Waterproof Solution



IP67
Silicone Extrusion

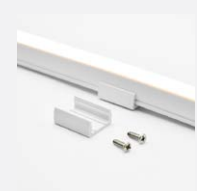
Wet location
Short time under water

DIMENSION



* L: Total length; La: LED strip length; L1: Minimum cutting unit; N: Number
 * The wiring kit in the diagram above is rear power cable, side and bottom power cable are also available.

ACCESSORIES

 <p>NE100-BR</p> <p>Bottom mounting brackets for flexible LED neon strip light NE100.</p>	 <p>NE100-RC</p> <p>Rigid Aluminum channel for flexible LED neon strip light NE100.</p>	 <p>NE100-MC</p> <p>Top mounting clips for flexible LED neon strip light NE100.</p>	 <p>NE100-FC</p> <p>Flexible Aluminum channel for side bend LED neon strip light NE100.</p>	 <p>NE100-WK</p> <p>Power cable wiring kit for LED neon strip light NE100. [Rear/Side/Bottom]</p> <div style="display: flex; flex-direction: column; align-items: center;"> <p>NE100-WK-RR</p>  <p>NE100-WK-SD</p>  <p>NE100-WK-BT</p>  </div>
--	---	---	--	--