

### Features:

1. Material: Anodized Aluminum 6063 + PC
2. Multiple colours and connectors available.
3. End cap: PC, same color as profile
4. Max. Single Profile length: 8ft 2in (2.5m)
5. Operating Temperature: -20°C ~ +45°C
6. Storage Temperature: -40°C ~ +60°C
7. Lifespan: 50,000 hours
8. Certification:
9. Warranty: 5 years

Model	Finish	Length	Installation
LS1911C-P	WH: White BK: Black SV: Silver	4ft 8ft Customized	A: Suspension A B: Suspension B C: Surface Mounted

Project:

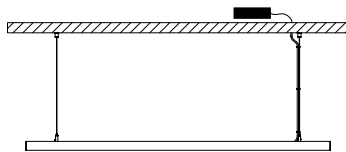
Qty:

Date:

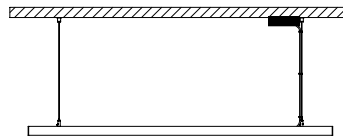
Client:

Notes:

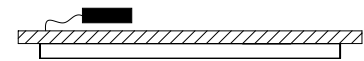
### Installation:



**A** Suspension installation with remote driver (in junction box).

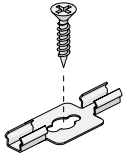


**B** Suspension installation with surface mounted driver (with canopy).



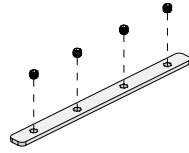
**C** Surface mounted installation with remote driver (in junction box).

## Accessories: Select what you need



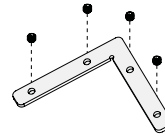
**LS1911-MC**

Surface mounting clip, 1pcs



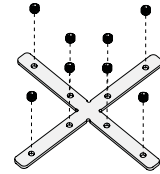
**CN2001**

Profile straight connector, 1pcs



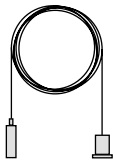
**CN2002**

Profile 90° connector, 1pcs



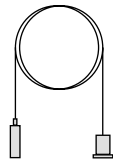
**CN2005**

Profile cross connector, 1pcs



**CR1001**

12ft Suspension wire, 2pcs



**CR1002**

6ft Suspension wire, 2pcs